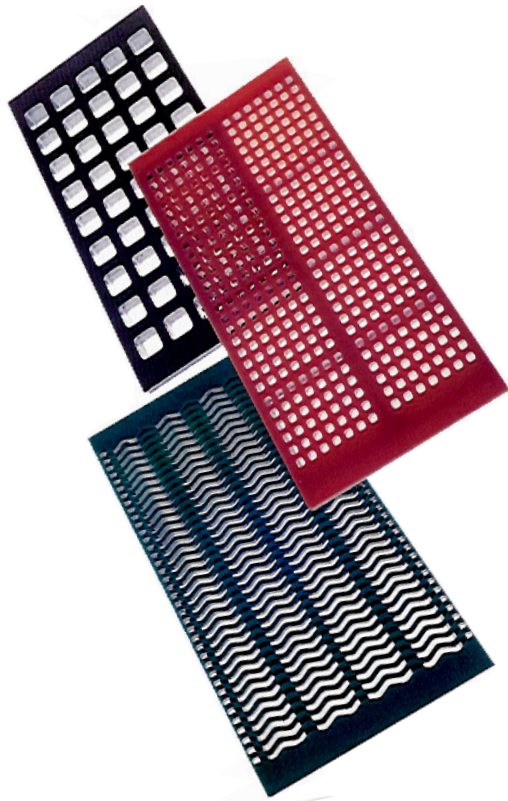


PIPO TWO®

POLYURETHANE SCREEN MODULES

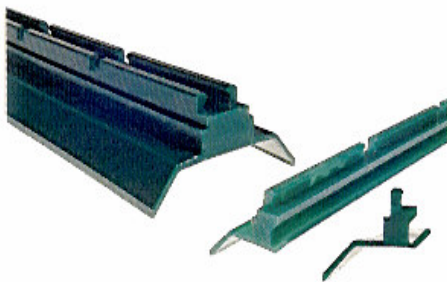


This modular screen system has set the standard for the twenty first century. The total flat surface ensures even feed distribution over the screen. Modules are available with varied configurations including flat, ramp, cross dam and deflectors. Apertures are available in square, slotted, tear drop, hexagonal and splits.

PIPO TWO has the ability to incorporate other surface media within the engaging clip. E.g. PIPO TWO WEDGE, PIPO TWO PERFORATED PLATE. (as illustrated below)



NEW DESIGN DEFLECTOR RAIL



Our intermediate rail currently used in the PIPO TWO System now incorporates a deflecting polyurethane strip eliminating any contact of the screen module and the machine subframe. Wear is also greatly reduced by the raw material being deflected directly to the under pan rather than acting on the subframe and supporting structure.

Johnsonscreens™
A Weatherford Company

PIPO TWO®

INSTALLATION STEPS



FIG. 1

STEP ONE:

Ensure the existing subframe is clean and free from rust, scale and weld splatter on the top surfaces (Fig. 1). Remove Nuts if welded to underside of subframe.

STEP TWO:

Fit Intermediate Rails along with subframe with hold down bolt loosely fitted (hand tight). (See Intermediate rails fitted to deck in Fig. 2).

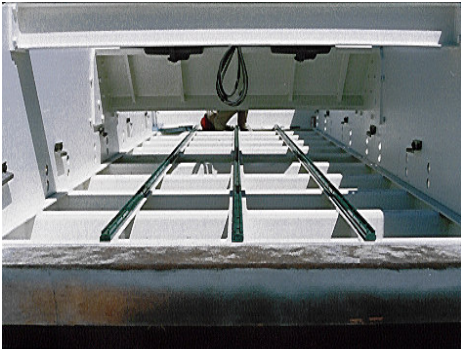


FIG. 2

STEP THREE:

Working from the Feed End, install the first row of modules across width of the machine. (Fig. 3).

Install similar rows of modules across the width, over the butted joins of the intermediate rails, continuing to the discharge end.

This is to ensure the intermediate rails are parallel and correctly aligned and the modules will fit into place firmly. This is an important procedure and should be carried out step by step as described. (Fig. 3).



FIG. 3

STEP FOUR:

With the “guide modules” still in position, tighten all hold down bolts which are visible to 140 ft/lbs (190Nm) with a torque wrench or impact gun.

Remove “guide modules” from both ends of screen and tighten up remaining bolts. Repeat for the modules over joins. Check all bolts for correct torque.

STEP FIVE:

The modules are now ready to be fitted to the Deck. Starting from the Feed End, position the first row of modules and “snap” into position. Continue down the Deck remembering to fit weir modules in the predetermined positions. (Fig. 4).

Note: Plain Modules have a half diamond deflector as can be seen in Fig. 4. These can be placed in any pattern to assist in deflecting fines from “tracking“.

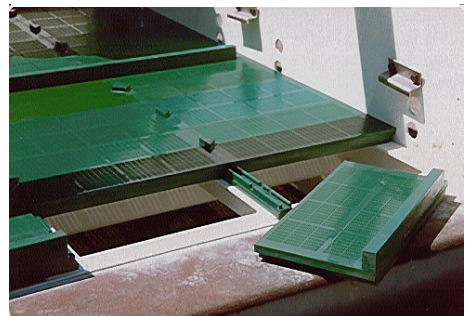


FIG. 4

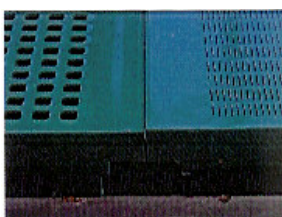
STEP SIX:

Fit the wedge cleats into position leaving bolts finger tight.

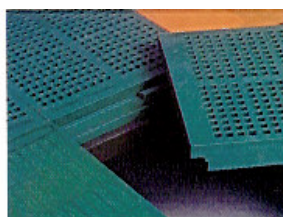
Place the side clamps in position with the wedge fitted approximately halfway along the cleat. Tighten cleat bolts.

Hammer the double acting wedge “home”.

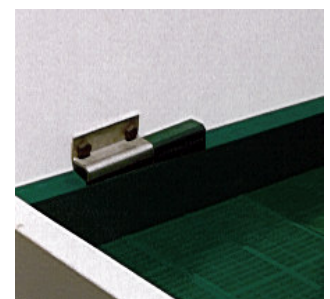
Check that the side clamp is hard against side plate. (Fig. 3).



Module & Intermediate Rail Assembly



Modules



No Bolt Side Clamp & wedge assembly