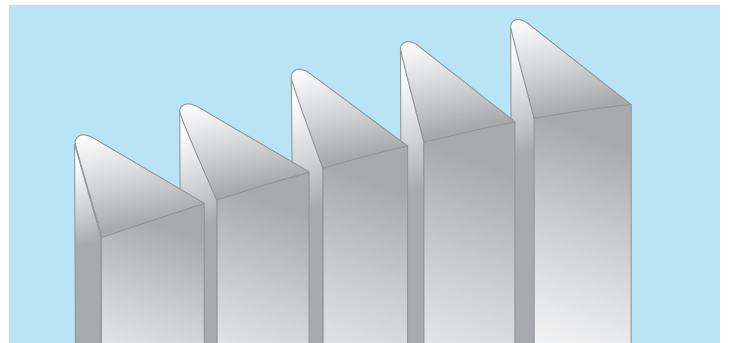
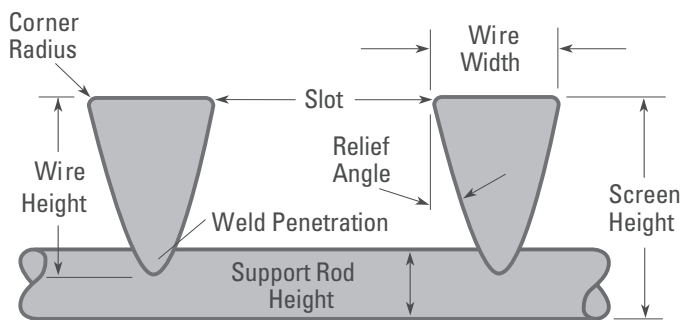


Flat Panel Fish Diversion Screens

Strong, and durable, yet smooth and safe for fish; Johnson Screens flat panels are designed for applications where fish protection is essential

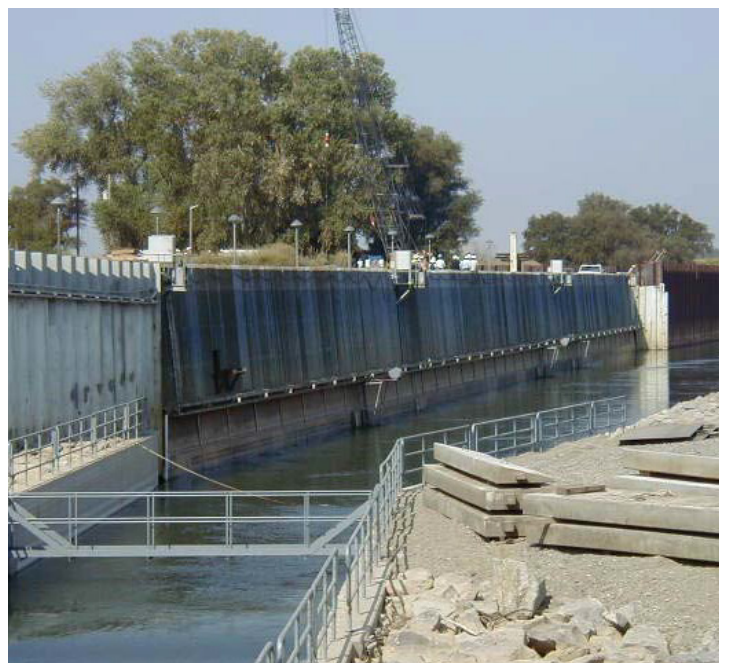
Proven Design

The high open area created with welded Vee-Wire allows natural water flow with no turbulence, no high velocity zones, and no “dead” areas. Other screen materials such as perforated plate, woven mesh, and looped wire cannot meet the flow efficiency of welded Vee-Wire fish panels



Strong, Durable Construction

An all-welded, continuous slot, stainless steel or Z-Alloy metal construction insures that even the largest intake projects can be screened with confidence. Johnson Screens can also design and build fish screen accessories such as slide rails, blank plates, frames, air backwash systems, and support grids for a guaranteed fit and efficient field assembly.



Regulatory Compliance

Vee-Wire screens have been identified as best available technology by the EPA and the NMFS. The non-plugging high open area design meets the most demanding flow requirements while the smooth flat surface provides a safe barrier for fish and fish egg protection. Johnson Screen's designs maintain a slot velocity of under 0.5 fps. This is critical to creating a non-fish impinging environment and complying with local, state, and federal fish screening regulations.



Partial list of Johnson Screens' flat panel and fish diversion users

- Banta Carbona Irrigation District, CA
- Contra Costa Water District, CA
- Tracy, CA Fish Test Facility
- City of Denver, CO
- Oregon Dept of Fish & Wildlife
- City of Portland, OR
- City of Sacramento, CA
- E.A. Fairbairn, CA WTP
- City of Tacoma, WA
- Eugene, OR Water & Electric Board
- United States Dept of the Interior-Bureau of Reclamation

